

# Exhaust Port Needle Valve (Speed Control Muffler)

Controls air flow on exhaust ports of pneumatic valves

## ⚠ Safety instructions for this product

Safety instructions, Common safety instructions for each product category and Detailed safety instructions for each product are in the end of this catalog and our website.

## Model Designation (Example)



### (1) Exhaust Port Needle Valve (Speed Control Muffler)

### (2) Thread size (R)

Code	Metric thread	Taper pipe thread				Unified fine thread	National pipe thread tapered			
	<b>M5</b>	<b>O1</b>	<b>O2</b>	<b>O3</b>	<b>O4</b>	<b>U10</b>	<b>N1</b>	<b>N2</b>	<b>N3</b>	<b>N4</b>
Thread size	M5×0.8	R1/8	R1/4	R3/8	R1/2	10-30UNF	NPT1/8	NPT1/4	NPT3/8	NPT1/2

### (3) Wrench size specification

Code	No code	<b>U</b>
Wrench size spec.	mm spec.	inch spec.

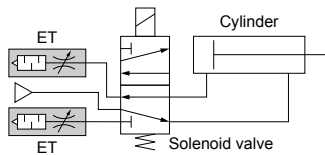
## Characteristics

### Flow control valve of low cost type.

Metering valve with silencer is cost effective.

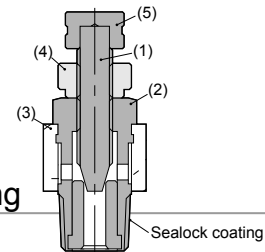
### The valve can be attached directly to a solenoid valve.

Best suitable in case a cylinder, etc. has no sufficient space around for installation of a speed controller or adjustment of the needle. (Note: Please install it not too far from a cylinder.)



## Specifications

Fluid medium	Air
Operating pressure range	0 to 0.9 MPa
Operating temp. range	0 to 60°C (No freezing)






## Sectional drawing


No.	Parts	Material
(1)	Needle	Nickel-plated brass
(2)	Metallic body	Nickel-plated brass
(3)	Element	Polyethylene
(4)	Lock nut	Aluminum
(5)	Knob	Nickel-plated brass

\* The gasket material of M5 or UNF thread is SPCC + NBR.

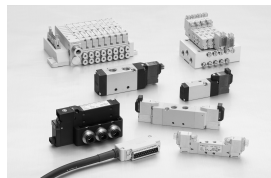
RoHS2 (2011/65/EU+EU2015/863) compliant

Type	Model code ET R	Model code ET RU
Exhaust Port Needle Valve  	ETM5	ETU10U
	ET01	ETN1U
	ET02	ETN2U
	ET03	ETN3U
	ET04	ETN4U

 CAD data is available at PISCO website.

 Packaging specifications  
1 pc. /bag

## Related product



Solenoid valve series

► From P.214