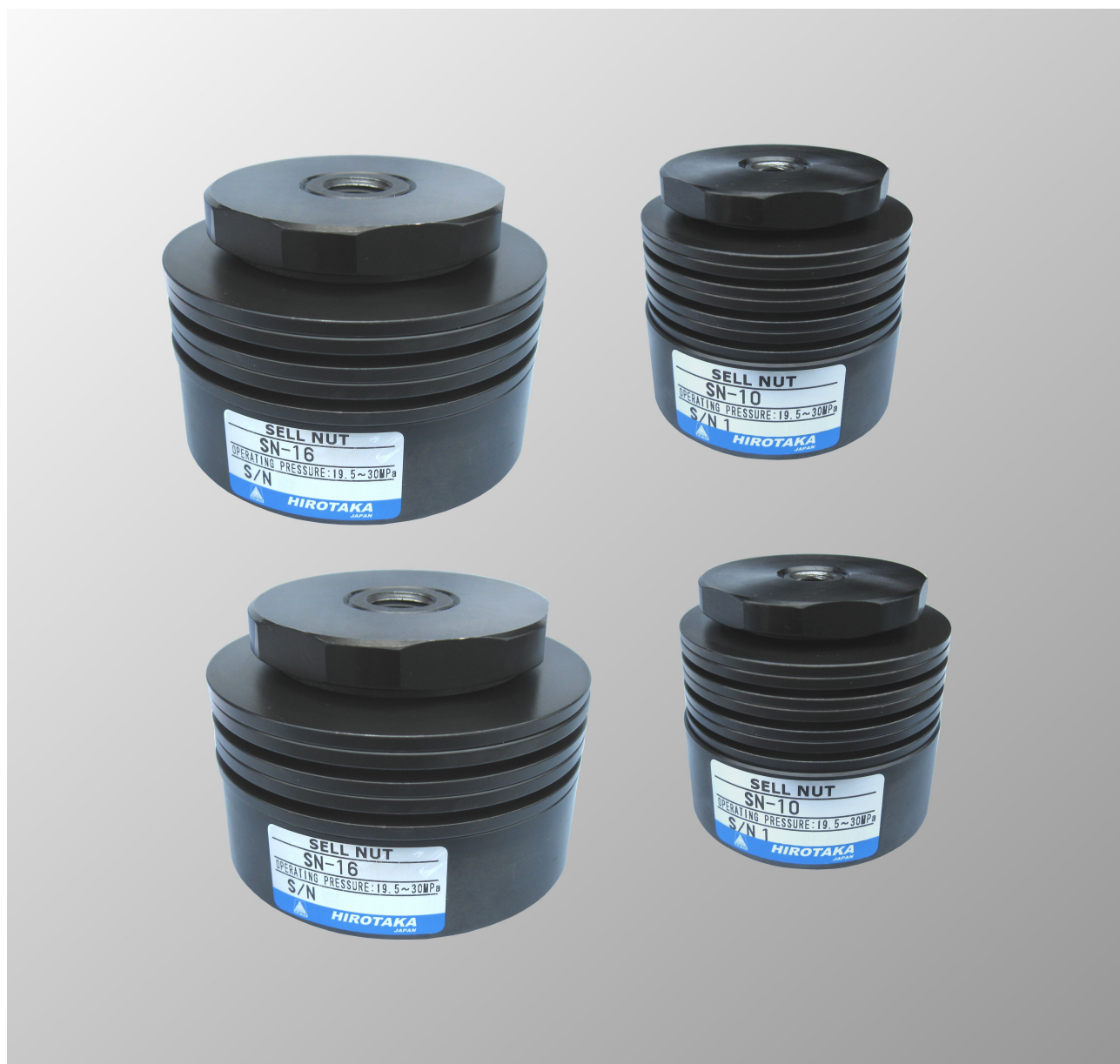




Spring type automatic clamp

# SELNUT



**HIROTAKE MFG. Co.,LTD.**

# SELNUT

## Overview

The variation in the power of bolting is canceled with the product which automated the nut for bolting of a bolt formula clamp, and power is demonstrated to shortening of bolting time, or laborsaving of bolting. Therefore, it is unique automatic clamp apparatus which can attain the safety and increase in efficiency of work at the same time it contributes to cost reduction.

## Feature

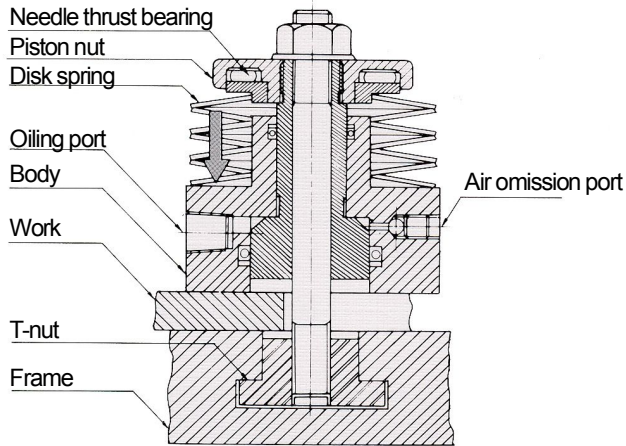
- Small and lightweight and powerful bolting power are demonstrated.
- In response to needs, it bound tight with the kind of abundant screws (M10 to M16), and has had a variety of power (7.3 to 13KN) in stock.
- When having clamped, even if there is a trouble in vibration, piping, etc. or a power failure occurs, there are no worries about slack.
- Since it is an automatic clamp, there is no gap at the time of the conventional screw bundle, and equalization of the bolting power of each part can be attained easily.

## Specifications

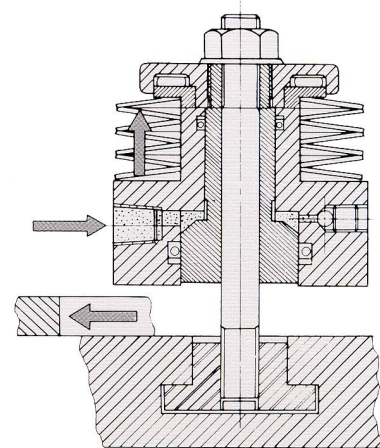
Model	SN-10	SN-12	SN-16
Maximum clamping force (KN)	7.3	13	13
Stroke (mm)	3	3	3
Screw hole diameter (mm)	M10 x 1.5	M12 x 1.25	M16 x 2.0
Maximum stroke capacity (cc)	1.36	2.8	2.8
Operating oil pressure (MPa)	19.5 to 30	19.5 to 30	19.5 to 30
Mass (kg)	1.1	2.3	2.3

## Operating Principles

**It clamps by opening of oil pressure.**



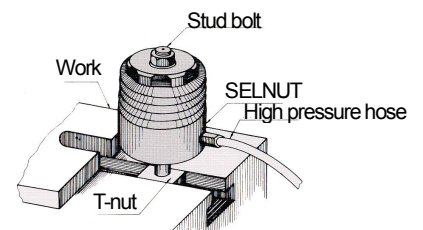
**It unclamps by oil pressure power.**



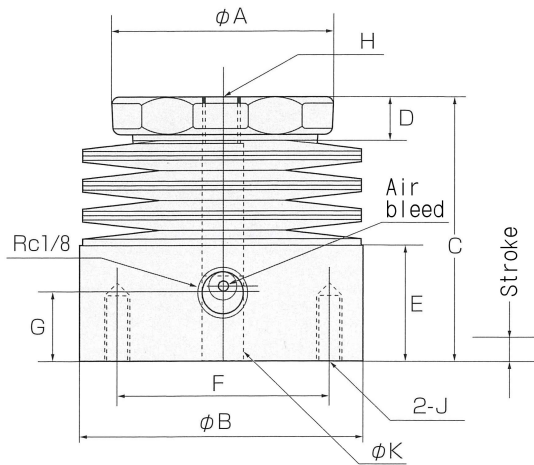
It will be in a unclamp state by contracting a conical claw by supply of oil pressure from a port.

## Usage

High oil pressure is supplied to SELNUT from RUSH BOOSTER, and it changes into the state of unclamp. The long hole of a work is inserted in SELNUT connected to the T-nut as shown in the right figure, and oil pressure is opened wide and clamped. Smoothly, safe and positive work can be done.



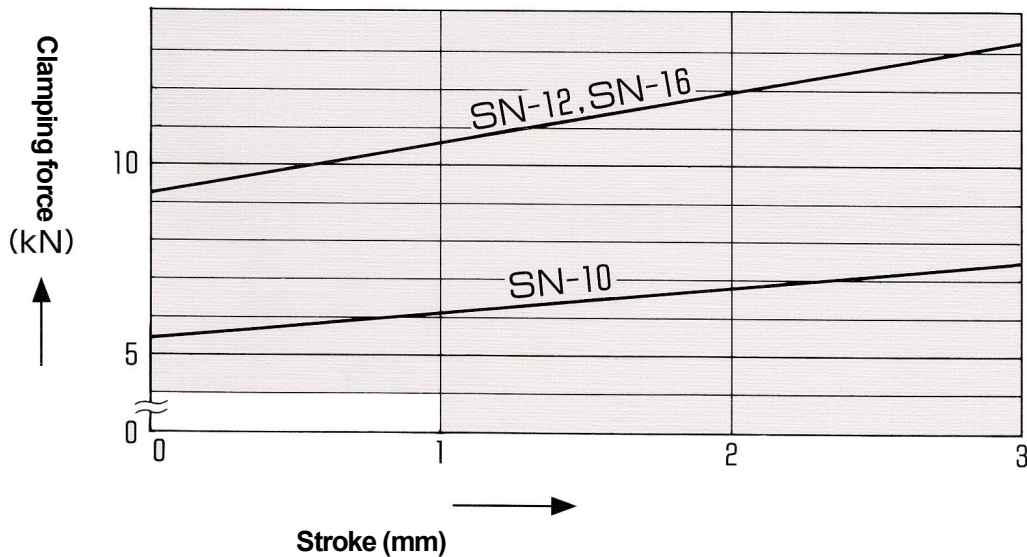
## Outside Shape Dimensional Drawing



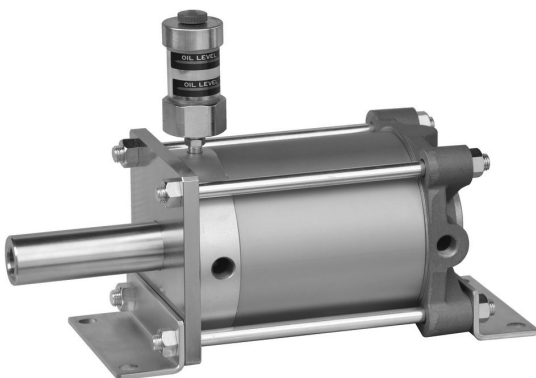
Unit: mm

Model Symbol	SN10	SN12	SN16
<b>A</b>	52	70	70
<b>B</b>	64	89	89
<b>C</b>	59	63	63
<b>D</b>	7	10	10
<b>E</b>	26	26	26
<b>F</b>	48	70	70
<b>G</b>	15	15	15
<b>H</b>	M10 x 1.5 Depth 20	M12 x 1.75 Depth 20	M16 x 2.0 Depth 20
<b>J</b>	M6 x 1.0 Depth 15	M6 x 1.0 Depth 15	M6 x 1.0 Depth 15
<b>K</b>	10.5	16.5	16.5

## Stroke and Clamping Force



## RUSH BOOSTER



**Use for the oil pressure source of SELNUT.  
It is generated the high oil pressure by air pressure.  
Please use RUSH BOOSTER of pressure  
intensifying ratio of 65 or 100 times.**

**Please find an original catalogue.**



**HIROTAKA MFG. CO.,LTD.**

HEAD OFFICE 5-89, Ikoma-cho, Kita-ku, Nagoya City, Aichi 462-0832, JAPAN

BRANCH OFFICE 207 Castle-Shinkoiwa, 1-56-14, Shinkoiwa, Katsushika-ku, Tokyo 124-0024, JAPAN

Phone +81-52-991-6111 Fax +81-52-991-6115

Phone +81-3-3651-4230 Fax +81-3-3651-4231

<http://www.hirotaka.co.jp/eng/>

## **LINE UP**

***PNEUMATIC POWER CILYNDER***

***PNEUMATIC BOOSTER***

***POWER-PACK CYLINDER***

***RUSH BOOSTER***

***HYDRAULIC CYLINDER***

***FLOATING CONNECTOR***

***SEL-LOCK CILYNDER***

***FREE-LOCK PAD***

***AUTO CLAMPER***

***SEL NUT***

***PNEUMATIC AND HYDRAULIC***

***EQUIPMENT***